

C610 Series

OKI®



Three business professionals (two men and one woman) are gathered around a table, looking at a document. An OKI C610 printer is on the table, and several printed documents are scattered around it. The background is a modern office with large windows.

**Increase the impact of your workgroup color output,
your levels of productivity and your cost efficiency**

C610n
C610dn
C610cdn
C610dtn



OKI and The Environment

Toner Save Mode Reduces amount of consumables used
Duplex (2-sided) Printing Saves energy and resources
Low Power Consumption Takes less energy to operate





The C610 Series from OKI combines HD Color and superior small-to-medium workgroup performance.

Highlights:

- HD Color Printing technology for sharp detail and rich, dramatic color
- Fast color output at up to 32 ppm; black & white at up to 34 ppm¹
- Time to first page as fast as 9 seconds color, 8 seconds black & white¹
- 1200 x 600 dpi resolution for crisp, clear output
- 400-sheet standard paper capacity, expandable to 1,460 sheets max. with optional 2nd and 3rd paper trays
- Models available with duplex (2-sided) printing, additional paper capacity, and 16 GB SD memory card standard
- PCL® 6, PCL 5c and PostScript® 3™ emulations; support for Windows® Vista® XPS and PDF v1.7
- 10/100 Base-T Network and USB v2.0 connectivity standard
- Handles media from 3" x 5" cards, 4" x 6" and 5" x 7" photo paper, to banner-size sheets
- Single Pass Color™ Digital technology for printing up to 140 lb. index stock (250 gsm) and banner sheets up to 8.5" x 52"
- Optional security features including data encryption and password protection
- Convenient operator panel displays toner levels, provides printer/network status, and enables printer and network setting changes
- Eco-friendly features to support green initiatives
- 2-piece consumables for low Total Cost of Ownership in color and mono²
- 1-Year limited warranty with Overnight Exchange on printer³; 5-Year limited warranty on LED printheads
- Live, toll-free technical support 24/7/365³

Expect more from these fast, reliable, compact desktop color printers.

C610 Series Digital Color printers are practically in a class by themselves. They combine fast, high-quality color output with exceptional performance, including superior print speeds. Models come with standard features such as automatic duplex (2-sided) printing (C610dn, -cdn and -dtn⁴), extra paper capacity (C610dtn⁴), a 16 GB SD memory card (C610cdn⁴), plus the legendary OKI reliability.

HD Color Printing technology – All four C610 Series models utilize this unique process for breathtaking output.

HD Color Printing technology combines multi-level LED printheads and microfine toner for precise toner placement; deep, saturated colors; and fine detail on regular copy paper and glossy media.

Rich color pages at up to 32 per minute¹ –

The C610 Series delivers crisp 1200 x 600 dpi color output, with the first page printing in as little as 9 seconds.¹ Black & white pages print at up to 34 ppm, the first in as little as 8 seconds.¹ The C610 Series supports PCL® and PostScript® emulations, as well as Windows® Vista® XPS and PDF Direct Print technologies.

Flexible paper handling – All C610 Series models have a paper capacity of at least 400 sheets: a 300-sheet paper tray plus built-in 100 sheet multi-purpose tray for labels, envelopes, transparencies, and index stock up to 140 lb. (250 gsm). Use them

to print everything from 3" x 5" cards, 4" x 6" and 5" x 7" photo paper, to banner-size sheets up to 8.5" wide by 52" in length.

Since the more sheets a printer holds means fewer user interventions, the C610 Series can further increase your productivity: the C610dtn holds 930 sheets, with its standard 530-sheet 2nd tray—optional on the other three. All four models have a max paper capacity of 1,460 sheets, with available 2nd tray and 3rd paper trays.

Workgroup connectivity built in – Share the advantages and efficiencies of any or all of the C610 Series models through the internal OkiLAN® 10/100 Base-T print server. Or make them personal printers by connecting through the high-speed USB 2.0 port.

Unmatched warranty support – We're so confident in the reliable performance of the C610 Series that we provide an industry-leading 5-year warranty on their printheads, and a 1-year limited printer warranty with Overnight Exchange and optional coverage extensions.³

If you need technical assistance, you can speak to a live OKI expert located in North America—24/7/365—by calling **800.OKI.DATA** (800.654.3282) at any time.³

Your best choice for superior color accuracy, a better bottom line, and a higher level of security.

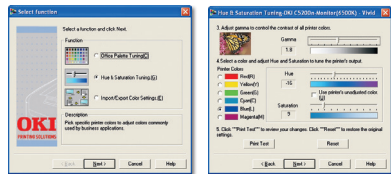
Digital Color printers from OKI deliver more than brilliant output at exceptionally fast speeds. The C610 Series also offers a long list of features that can improve your image, profitability and peace of mind. Here are some value-added examples:

CONTROL the quality of your output

Color Swatch Easily match custom colors to the color values on your C610 Series printer. Select a simple swatch to print a basic set of colors, then match the values in your application. Select a custom swatch and set the Hue, Saturation and Lightness to target your custom color.



Color Correct Makes it easy to adjust colors commonly found in applications such as Microsoft® Word, Excel® and PowerPoint®. It also lets you adjust the overall color of a print by controlling the lightness, darkness and contrast of images, and the intensity and lightness of the colors.



CONTROL your printing costs

Color Access Policy Manager (CAPM) Lets you control and monitor color usage by defining who can print and what gets printed. Decide who and what can print in color, in black & white or not at all, making color printing cost-effective. Access levels can be assigned by user name, PC/server name, application, file name and web sites. Once policies are configured, CAPM determines how—or if—incoming jobs will print. All policies are password-protected for added security.



HD Color Printing



Crisp, clear Black & White



No printout permitted

Job Accounting Enables tracking of color and mono printing costs, easy monitoring of printing activity, and greater control of printer usage. It generates reports for administrative, bill-back or cost-accounting purposes. User permissions can be assigned and are stored on the printer—not on the network—so the system is totally secure.

CONTROL the degree of your security

C610 Series models equipped with the 16 GB SD memory card provide enhanced security features that include Encrypted Secure Print:

- **256-Bit Encryption** Enables secure passage of sensitive documents from PC to printer, with processing and output requiring PIN identification.
- **Job Timeout** If not retrieved within a certain time (pre-set by the user), the document is sanitized (cleared) from the unit's SD memory card.
- **MAC Validation** The Message Authentication Code (MAC) is PC-encrypted into a document's printing data to prevent the file from being tampered with after it is sent to the printer. The printer reads the code and, if any alterations to the file are detected, issues a warning and cancels the job.

If you're looking for high speed, high quality, and a high level of control from your office printers, expect more from the C610 Series from OKI.

THE C610 SERIES AT A GLANCE

6,000 pages Color (CMY) and 8,000 pages Black² toner cartridges

1200 x 600 dpi resolution and HD Color Printing technology

Graphic display on operator panel for ease of use; also gauges toner usage

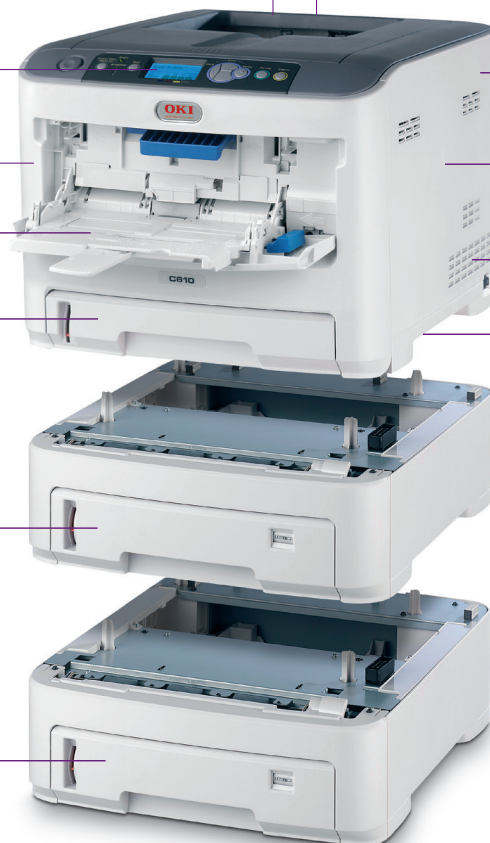
Up to 32 ppm color, 34 ppm mono print speeds¹

100-sheet multi-purpose tray handles up to 250 gsm

300-sheet universal paper tray

530-sheet 2nd paper tray (standard on C610dtn, optional on all other models)

Optional 530-sheet 3rd paper tray, for max capacity of 1,460 sheets



Duplex (2-sided) printing capability (optional on C610n, standard on all other models)

Single Pass Color™ technology with straight-through paper path, delivers high speed and reliability

High monthly duty cycle: rated at up to 75,000 pages

256 MB standard memory, expandable to 768 MB max.

¹ Published performance results based on laboratory testing. Individual results may vary.

² Printers ship with complete set of 2,000-page “starter” toner cartridges.

³ Available in the U.S. and Canada only.

⁴ Optional on other models.

C610 Series

Specifications

Performance

- **Print Speed:** Up to 32 ppm Color; up to 34 ppm Mono¹
- **Time to First Page:** As fast as 9 sec. Color; 8 sec. Mono¹
- **Processor:** 533 MHz PowerPC CPU
- **HD Color Printing Technology:** Combines multilevel LED printheads and microfine toner for sharp detail and rich color depth
- **Print Resolution:** 1200 x 600 dpi
- **Duty Cycle:** Up to 75,000 pg./mo.
- **Duplex (2-Sided) Printing:** Standard on C610dn, C610cdn and C610dtn; optional on C610n

Productivity Solutions

- **Web-based Printer Management:** PrintSuperVision and OKiLAN[®] Embedded Web Server
- **Direct PDF Printing:** Supports PDF v1.7²

Security Solutions²

- **Encrypted Secure Printing:** PIN/password-enabled; AES 256-bit encryption; Message Authentication Code (MAC)
- **Network Security:** IP address filtering, IPsec, MAC address filtering, SNMP v3, SSL/TLS, IPP over SSL/TLS, E-mail authentication, Protocol lockouts, IEEE802.1x

Cost Containment Solutions

- **Job Accounting Software:** Tracks color/mono pages by individual or department
- **Color Access Policy Manager:** Allows control over color printing access and converts unauthorized color print jobs to black & white

Color Management

- **Utilities:** Color Matching software and Color Correct from OKI

Compatibility

- **Emulations:** PCL[®] 6, PCL 5c; PostScript[®] 3[™]; IBM[®] PowerPrinter[®]; Epson[®] FX; Windows[®] Vista[®] XPS; PDF v1.7
- **Operating Systems:** Standalone and network – Windows 7, Vista, XP, Server 2003/2000/2008; Mac[®] support – OS X 10.3 and higher

Connectivity

- **Network Interface:** 10/100 Base-T Internal Ethernet Print Server
- **Network Protocols:** TCP/IP, NetBEUI, NetWare, EtherTalk
- **Local Ports:** USB v2.0; USB Host I/F (for Secure Card Solution)

Memory

- **Standard:** 256 MB
- **Maximum:** 768 MB
- **Memory Storage:** 16 GB SD Memory Card (standard on C610cdn, optional on C610n/dn/dtn)

Resident Typefaces

- **Scalable:** 86 MonoType, 80 PostScript fonts, 1 OKI original OCR font
- **Bitmap Fonts:** OCR-A/B LinePrinter
- **Bar Codes:** USPS, UPC-A/E, Code 39/128, EAN/JAN-8, EAN/JAN-13, EAN/UCC-128, Interleaved 2 of 5, CodaBar, PDF417, ZIP+4 PostNet[®]

Paper Handling

- **Paper Input:** C610n/dn/cdn – 400 sheets standard (300-sheet Legal/Letter/Universal Paper Tray + 100-sheet Multi-Purpose Tray); C610dtn – 930 sheets (with 530-sheet 2nd Paper Tray). All models 1,460 sheets max. (with standard/optional 530-sheet 2nd Tray and 3rd Paper Trays)
- **Multi-Purpose Tray:** Standard 100-sheet; handles overhead transparencies, envelopes, mailing label stock, and banners
- **Paper Sizes (Min./Max.):** Main Tray 4.1" x 5.8"/8.5" x 14"; 2nd/3rd Tray 5.8" x 8.3"/8.5" x 14"; Multi-Purpose Tray 3" x 5"/8.5" x 52" banner
- **Paper Weight:** Main/2nd/3rd Tray 17 lb. bond – 120 lb. index (64 – 220 gsm); manual feed via Multi-Purpose Tray 17 lb. bond – 140 lb. index (64 – 250 gsm); duplex 17 lb. – 32 lb. bond (64 – 120 gsm)

Environmental

- **Size (WxDxH):** 17.1" x 21.5" x 13.4" (43.5 cm x 54.7 cm x 34.0 cm)
- **Weight:** Printer only – 57.3 lb. (26.0 kg)
- **Power Consumption:** Idle 100W, Typical 600W, Peak 1300W
- **Acoustics:** Operating ≤ 54 dB(A); Standby ≤ 37 dB(A)
- **ENERGY STAR[®] Compliance:** Yes⁶

Supplies

- **Toner Cartridges and Image Drums:** Separate Black, Cyan, Magenta and Yellow
- **Toner Cartridge Life:** 6,000 pages CMY, 8,000 pages Black³
- **Image Drum Life:** Approximately 20,000 pages⁴

Warranty

- **Printer:** 1-Year limited with Overnight Exchange⁵
- **Digital LED Printheads:** 5-Year limited warranty

¹ Published performance results based on laboratory testing. Individual results may vary.

² Requires SD memory card (standard on C610cdn).

³ Based on ISO 19798. Printers ship with a complete set of 2,000-page "starter" toner cartridges.

⁴ Estimated life, based on 3 pages per job.

⁵ Available in the U.S. and Canada only.

⁶ Achieves ENERGY STAR[®] energy savings; product fully qualifies when packaged with (or used with) a duplex tray.

Ordering Information

Description	Part Numbers	
C610n 120V (Multilingual) ^a	62433401	
C610n 230V (Multilingual) ^a	62433402	
C610dn 120V (Multilingual)	62433403	
C610dn 230V (Multilingual)	62433404	
C610dtn 120V (Multilingual)	62433405	
C610dtn 230V (Multilingual)	62433406	
C610cdn 120V (Multilingual)	62433407	
C610cdn 230V (Multilingual)	62433408	
Options		
Duplex (2-Sided Printing) Unit	70061601	
530-sheet 2nd & 3rd Paper Trays	44274501	
Memory Expansion:		
256 MB DIMM	70061801	
512 MB DIMM	70061901	
16 GB SD Memory Card	70061701	
Supplies		
Toner Cartridges:		
Cyan Toner Cartridge	6,000 pg. ³	44315303
Magenta Toner Cartridge	6,000 pg. ³	44315302
Yellow Toner Cartridge	6,000 pg. ³	44315301
Black Toner Cartridge	8,000 pg. ³	44315304
Image Drum Kits:		
Cyan Image Drum Kit	20,000 pg. ⁴	44315103
Magenta Image Drum Kit	20,000 pg. ⁴	44315102
Yellow Image Drum Kit	20,000 pg. ⁴	44315101
Black Image Drum Kit	20,000 pg. ⁴	44315104
OKIcare® Overnight Exchange Warranties ⁵		
	U.S.	Canada
C610 Srs. 2-Yr Warranty	38014302	38014312
C610 Srs. 3-Yr Warranty	38014303	38014313
OKIcare® On-Site Warranties ⁵		
	U.S.	Canada
C610 Srs. Upgrade to On-Site	38014501	38014511
C610 Srs. 2-Yr On-Site Wty.	38014502	38014512
C610 Srs. 3-Yr On-Site Wty.	38014503	38014513
Print Media		
Sheets Per Box		
Bright White Proofing Sheets (32 lb.):		
8.5" x 11"	500	52206101
Ultra High Gloss Sheets (8.5" x 11"):		
	100	52208901
	250	52208902
Premium Color Transparency Film	50	52205701
Premium Card Stock (8.5" x 11"):		
60 lb. Cover	250	52205601
90 lb. Index	250	52205602
110 lb. Index	250	52205603
SynFlex™ Paper (Waterproof and Tear-resistant):		
8.5" x 11"	100	52205901
Premium Envelopes (size #10):	100	52206301
	500	52206302
Banner Paper (8.5" x 35.4")	100	52206002

For more information on Digital Color Printers and supplies from OKI, including OKIcare[®] Extended Service Programs⁵: **1.800.OKI.DATA** (800.654.3282).



OKI DATA AMERICAS, INC.

USA
2000 BISHOPS GATE BLVD.
MOUNT LAUREL, NJ 08054-4620
TEL: 800.OKI.DATA (800.654.3282)
FAX: 856.222.5320

CANADA
4140B SLADEVIEW CRESCENT
UNITS 7 & 8
MISSISSAUGA, ONTARIO L5L 6A1
TEL: 905.608.5000
FAX: 905.608.5040

LATIN AMERICA
2000 BISHOPS GATE BLVD.
MOUNT LAUREL, NJ 08054-4620
TEL: 55.5263.8780 (MEXICO)
FAX: 55.5250.3501 (MEXICO)

OKI DATA DE MÉXICO, S.A. DE C.V.
MARIANO ESCOBEDO, 748 8^º PISO
COL. NUEVA ANZURES C.P. 11590
MÉXICO, D.F.
TEL: 55.5263.8780
FAX: 55.5250.3501

OKI DATA DO BRASIL INFORMÁTICA LTDA.
AV. ALFREDO EGÍDIO DE SOUZA ARANHA, 100
BLOCO C – 4^º ANDAR
04726-170 – SÃO PAULO – SP – BRASIL
TEL: 11.3444.3500
FAX: 11.3444.3502

WWW.OKIDATA.COM

Specifications are subject to change without notice.

© 2013 Okidata Americas, Inc. OKI Reg. T.M., M.D. M.R., OKIcare, Reg. T.M., Oki Electric Industry Co., Ltd. High Definition Color logo T.M., Single Pass Color T.M. and design Reg. T.M., Oki Data Corp. SynFlex, Overnight Exchange logo T.M., Oki Data Americas, Inc. PCL Reg. T.M., Hewlett Packard Co. Microsoft, Windows, Vista, PowerPoint, Excel Reg. T.M., Microsoft Corp. PostScript Reg. T.M., PostScript 3 T.M., Adobe Systems, Inc. Mac Reg. T.M., Apple Inc. USB-IF logo T.M., Universal Serial Bus Implementers Forum, Inc. ENERGY STAR Reg. T.M., U.S. EPA.

Printed in the USA

MS15592-1213

OKI[®]
Open up your dreams